

**PROJECTOR WISHES  
COME TRUE.**

**EPSON 3LCD PROJECTORS**

**1-CHIP PROJECTORS**



Up to **3x**  
Brighter Colours  
with Epson Projectors\*

**TRUE  
BRIGHTNESS**

WHITE 3000 LUMENS

COLOUR 3000 LUMENS



WHITE 3000 LUMENS

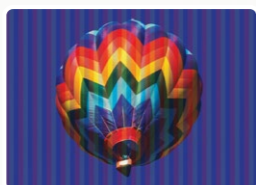
COLOUR 430 LUMENS\*\*



**NO  
RAINBOW  
EFFECT**

**TRUE  
COMFORT**

LIGHT SOURCE  
PRISM



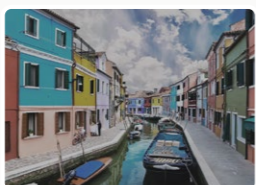
LIGHT SOURCE  
ROTATING  
COLOUR WHEEL



UP TO **3x**  
WIDER  
COLOUR GAMUT\*\*  
Epson Projectors

**TRUE  
REALISM**

WIDER  
COLOUR  
RANGE



SMALLER  
COLOUR  
RANGE

**TRUE  
COLOURS**

Brighter, vivid projection from Epson.

9 out of 10  
PEOPLE  
PREFER  
IMAGES FROM  
EPSON  
PROJECTORS\*



EpsonSEA  
EpsonSEA  
EpsonSEA  
EpsonSoutheastAsia  
Epson Southeast Asia

Find out more at [www.epson.com.sg/truecolours](http://www.epson.com.sg/truecolours)

\* Leading Epson business and education projectors vs. leading 1-chip DLP® projectors, selected according to NPD data as of July 2015. Based on U.S. research conducted by Radius Research.  
\*\* These lumen statistic can be found at [www.colorlightoutput.com](http://www.colorlightoutput.com).  
1 Color brightness (color light output) in brightest mode, measured by a third-party lab in accordance with IDMS 15.4. Color brightness will vary depending on usage conditions. Top-selling Epson 3LCD projectors versus top-selling 1-chip DLP® projectors based on NPD sales data for May 2017 - April 2018.  
2 Gamut volume in brightest mode, measured by a third-party lab in 3D in the CIE L\*a\*b\* coordinate space. Top-selling Epson 3LCD projectors versus top-selling 1-chip DLP® projectors based on NPD sales data for May 2017 - April 2018.

**IT'S IN THE DETAILS.**

With 3LCD panels, every projection gives you spectacular true colours.

**BUSINESS  
& HOME  
PROJECTORS  
GUIDE**

The complete projection solution guide for **Business** and **Home**.



**HOME**

**BUSINESS**

**EDUCATION**



9 out of 10  
PEOPLE  
PREFER  
IMAGES FROM  
EPSON  
PROJECTORS\*

**1**  
WORLD'S NO.1  
PROJECTORS  
19 YEARS RUNNING 2001 - 2019  
SOURCE: FUTURESOURCE CONSULTING

\*Leading Epson business and education projectors vs. leading 1-chip DLP® projectors, selected according to NPD data as of July 2015. Based on U.S. research conducted by Radius Research.



# BUSINESS PROJECTORS

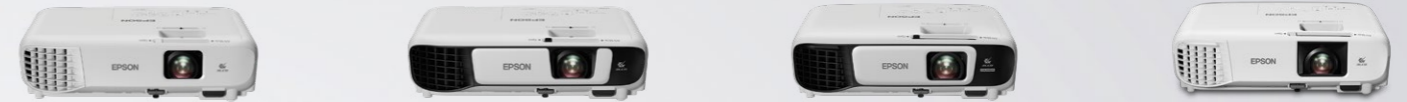
## QUICK GUIDE

### Small Sized Rooms



Model Name		EB-S05	EB-S41	EB-X05	EB-X41
MAIN SPECIFICATIONS	White Brightness	3,200 lm	3,300 lm	3,300 lm	3,600 lm
	Colour Brightness	3,200 lm	3,300 lm	3,300 lm	3,600 lm
	Native Resolution	SVGA	SVGA	XGA	XGA
	Contrast Ratio	15,000:1	15,000:1	15,000:1	15,000:1
	Keystone (V) / (H)	±30° <sub>(V)</sub> / ±30° <sub>(H)</sub>	±30° <sub>(V)</sub> / ±30° <sub>(H)</sub>	±30° <sub>(V)</sub> / ±30° <sub>(H)</sub>	±30° <sub>(V)</sub> / ±30° <sub>(H)</sub>
	Optical Zoom			1.2x	1.2x
	Auto Keystone	● (Vertical Only)	● (Vertical Only)	● (Vertical Only)	● (Vertical Only)
LAMP	Lamp Life (Normal/Eco)	6,000 / 10,000 hrs	6,000 / 10,000 hrs	6,000 / 10,000 hrs	6,000 / 10,000 hrs
LASER	Type				
	Laser Life (Normal/Quiet)				
INPUT TERMINALS	D-Sub15 (VGA)	1	1	1	1
	Composite Video (RCA)	1	1	1	1
	S-Video				
	HDMI	1	1	1	1
	USB	Ax1, Bx1	Ax1, Bx1	Ax1, Bx1	Ax1, Bx1
	Audio Input RCA / Stereo Mini Jack	1 / 0	1 / 0	1 / 0	1 / 0
	Mic-Input				
OUTPUT TERMINALS	Monitor-Out				
	Audio-Out				
	SDI (BNC) Out				
	DVI-D Out				
NETWORK	Network (LAN RJ45)				
	Wireless	Optional	Optional	Optional	Optional
CONTROL	RS-232C				
OTHERS	Power (Normal/Eco) Consumption	282 / 203 W	282 / 203 W	282 / 203 W	282 / 203 W
	Speaker Wattage	2 W	2 W	2 W	2 W
	Weight (kg) *Without Accessories	2.4 kg	2.5 kg	2.5 kg	2.5 kg
	Air Filter	ELPAF32	ELPAF32	ELPAF32	ELPAF32
	Lamp Model	ELPLP96	ELPLP96	ELPLP96	ELPLP96

### Small Sized Rooms



Model Name		EB-W05	EB-W41	EB-U42	EB-X39
MAIN SPECIFICATIONS	White Brightness	3,300 lm	3,600 lm	3,600 lm	3,500 lm
	Colour Brightness	3,300 lm	3,600 lm	3,600 lm	3,500 lm
	Native Resolution	WXGA	WXGA	WUXGA	XGA
	Contrast Ratio	15,000:1	15,000:1	15,000:1	15,000:1
	Keystone (V) / (H)	±30° <sub>(V)</sub> / ±30° <sub>(H)</sub>	±30° <sub>(V)</sub> / ±30° <sub>(H)</sub>	±30° <sub>(V)</sub> / ±30° <sub>(H)</sub>	±30° <sub>(V)</sub> / ±30° <sub>(H)</sub>
	Optical Zoom	1.2x	1.2x	1.2x	1.2x
	Auto Keystone	● (Vertical Only)	● (Vertical Only)	● (Vertical Only)	● (Vertical Only)
LAMP	Lamp Life (Normal/Eco)	6,000 / 10,000 hrs	6,000 / 10,000 hrs	6,000 / 10,000 hrs	6,000 / 12,000 hrs
LASER	Type				
	Laser Life (Normal/Quiet)				
INPUT TERMINALS	D-Sub15 (VGA)	1	1	1	2
	Composite Video (RCA)	1	1	1	1
	S-Video				
	HDMI	1	1 Support MHL	2 1 x Support MHL	1
	USB	Ax1, Bx1	Ax1, Bx1	Ax1, Bx1	Ax1, Bx1
	Audio Input RCA / Stereo Mini Jack	1 / 0	1 / 0	1 / 0	1 / 2
	Mic-Input				
OUTPUT TERMINALS	Monitor-Out				1
	Audio-Out				1
	SDI (BNC) Out				
	DVI-D Out				
NETWORK	Network (LAN RJ45)				1
	Wireless	Optional	Optional	Built-in	Optional
CONTROL	RS-232C				1
OTHERS	Power (Normal/Eco) Consumption	282 / 203 W	282 / 203 W	298 / 219 W	309 / 227 W
	Speaker Wattage	2 W	2 W	2 W	5 W
	Weight (kg) *Without Accessories	2.5 kg	2.5 kg	2.8 kg	2.7 kg
	Air Filter	ELPAF32	ELPAF32	ELPAF32	ELPAF32
	Lamp Model	ELPLP96	ELPLP96	ELPLP96	ELPLP96

# BUSINESS PROJECTORS

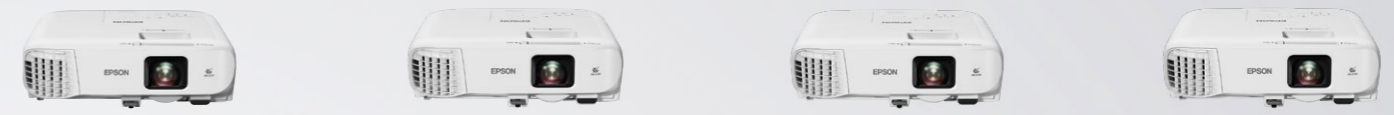
## QUICK GUIDE

### Small Sized Rooms



Model Name		EB-W39	EB-W50	EB-U50	EB-980W
MAIN SPECIFICATIONS	White Brightness	3,500 lm	3,800 lm	3,700 lm	3,800 lm
	Colour Brightness	3,500 lm	3,800 lm	3,700 lm	3,800 lm
	Native Resolution	WXGA	WXGA	WUXGA	WXGA
	Contrast Ratio	15,000:1	20,000:1	16,000:1	15,000:1
	Keystone (V) / (H)	±30° <sub>(V)</sub> / ±30° <sub>(H)</sub>	±30° <sub>(V)</sub> / ±30° <sub>(H)</sub>	±30° <sub>(V)</sub> / ±30° <sub>(H)</sub>	±30° <sub>(V)</sub> / ±30° <sub>(H)</sub>
	Optical Zoom	1.2x	1.2x	1.2x	1.6x
	Auto Keystone	● (Vertical Only)	● (Vertical Only)	● (Vertical Only)	● (Vertical Only)
LAMP	Lamp Life (Normal/Eco)	6,000 / 12,000 hrs	10,000 / 17,000 hrs	10,000 / 17,000 hrs	6,000 / 12,000 hrs
LASER	Type				
	Laser Life (Normal/Quiet)				
INPUT TERMINALS	D-Sub15 (VGA)	2	2	2	2
	Composite Video (RCA)	1			1
	S-Video				
	HDMI	2	2	2	2 1 x Support MHL
	USB	Ax1, Bx1	Ax1, Bx1	Ax1, Bx1	Ax1, Bx1
	Audio Input RCA / Stereo Mini Jack	1 / 2	0 / 2	0 / 2	1 / 2
	Mic-Input				1
OUTPUT TERMINALS	Monitor-Out	1	1	1	1
	Audio-Out	1	1	1	1
	SDI (BNC) Out				
	DVI-D Out				
NETWORK	Network (LAN RJ45)	1	1	1	1
	Wireless	Optional	Optional	Built-in	Optional
CONTROL	RS-232C	1	1	1	1
OTHERS	Power (Normal/Eco) Consumption	309 / 227 w	285 / 218 w	285 / 218 w	309 / 227 w
	Speaker Wattage	5 w	5 w	5 w	16 w
	Weight (kg) *Without Accessories	2.7 kg	3.0 kg	3.1 kg	3.1 kg
	Air Filter	ELPAF32	ELPAF59	ELPAF59	ELPAF54
	Lamp Model	ELPLP96	ELPLP97	ELPLP97	ELPLP96

### Small Sized Rooms



Model Name		EB-970	EB-2247U	EB-2142W	EB-2042
MAIN SPECIFICATIONS	White Brightness	4,000 lm	4,200 lm	4,200 lm	4,400 lm
	Colour Brightness	4,000 lm	4,200 lm	4,200 lm	4,400 lm
	Native Resolution	XGA	WUXGA	WXGA	XGA
	Contrast Ratio	15,000:1	15,000:1	15,000:1	15,000:1
	Keystone (V) / (H)	±30° <sub>(V)</sub> / ±30° <sub>(H)</sub>	±30° <sub>(V)</sub> / ±30° <sub>(H)</sub>	±30° <sub>(V)</sub> / ±30° <sub>(H)</sub>	±30° <sub>(V)</sub> / ±30° <sub>(H)</sub>
	Optical Zoom	1.6x	1.6x	1.6x	1.6x
	Auto Keystone	● (Vertical Only)	● (Vertical Only)	● (Vertical Only)	● (Vertical Only)
LAMP	Lamp Life (Normal/Eco)	6,000 / 12,000 hrs	5,500 / 12,000 hrs	5,500 / 12,000 hrs	5,500 / 12,000 hrs
LASER	Type				
	Laser Life (Normal/Quiet)				
INPUT TERMINALS	D-Sub15 (VGA)	2	2	2	2
	Composite Video (RCA)	1	1	1	1
	S-Video				
	HDMI	2 1 x Support MHL	2 1 x Support MHL	2 1 x Support MHL	2 1 x Support MHL
	USB	Ax1, Bx1	Ax1, Bx1	Ax1, Bx1	Ax1, Bx1
	Audio Input RCA / Stereo Mini Jack	1 / 2	1 / 2	1 / 2	1 / 2
	Mic-Input	1	1	1	1
OUTPUT TERMINALS	Monitor-Out	1	1	1	1
	Audio-Out	1	1	1	1
	SDI (BNC) Out				
	DVI-D Out				
NETWORK	Network (LAN RJ45)	1	1	1	1
	Wireless	Optional	Built-In Support Screen Mirroring	Built-In Support Screen Mirroring	Optional
CONTROL	RS-232C	1	1	1	1
OTHERS	Power (Normal/Eco) Consumption	309 / 227 w	331 / 227 w	331 / 227 w	331 / 227 w
	Speaker Wattage	16 w	16 w	16 w	16 w
	Weight (kg) *Without Accessories	3 kg	3.2 kg	3.1 kg	3 kg
	Air Filter	ELPAF54	ELPAF54	ELPAF54	ELPAF54
	Lamp Model	ELPLP96	ELPLP96	ELPLP96	ELPLP96

# BUSINESS PROJECTORS

## QUICK GUIDE



		Mid Sized Rooms			Short Throw Projectors		Ultra Short Throw Projectors			Ultra Short Throw Interactive Projectors			
Model Name		EB-L510U	EB-L610W	EB-L610U	EB-530	EB-535W	EB-536Wi Interactive	EB-680	EB-685W	EB-685Wi	EB-695Wi Touch Interactive	EB-696Ui Touch Interactive	
MAIN SPECIFICATIONS	White Brightness	5,000 lm	6,000 lm	6,000 lm	3,200 lm	3,400 lm	3,400 lm	3,500 lm	3,500 lm	3,500 lm	3,500 lm	3,800 lm	
	Colour Brightness	5,000 lm	6,000 lm	6,000 lm	3,200 lm	3,400 lm	3,400 lm	3,500 lm	3,500 lm	3,500 lm	3,500 lm	3,800 lm	
	Native Resolution	WUXGA	WXGA	WUXGA	XGA	WXGA	WXGA	XGA	WXGA	WXGA	WXGA	WUXGA	
	Contrast Ratio	>2,500,000:1	>2,500,000:1	>2,500,000:1	16,000:1	16,000:1	16,000:1	14,000:1	14,000:1	14,000:1	14,000:1	16,000:1	
	Keystone (V) / (H)	±30° (V) / ±30° (H)	±30° (V) / ±30° (H)	±30° (V) / ±30° (H)	±15° (V) / ±15° (H)	±15° (V) / ±15° (H)	±7° (V) / ±5° (H)	±3° (V) / ±3° (H)	±3° (V) / ±3° (H)	±3° (V) / ±3° (H)	±3° (V) / ±3° (H)	±3° (V) / ±3° (H)	
	Optical Zoom	1.6x	1.6x	1.6x									
	Auto Keystone	● (Vertical Only)	● (Vertical Only)	● (Vertical Only)			● (Vertical Only)						
LAMP	Lamp Life (Normal/Eco/Eco2)				5,000 / 10,000 / - hrs	5,000 / 10,000 / - hrs	5,000 / 10,000 / - hrs	5,000 / 10,000 / 9,000 hrs	5,000 / 10,000 / 9,000 hrs	5,000 / 10,000 / 9,000 hrs	5,000 / 10,000 / 9,000 hrs	5,000 / 10,000 / - hrs	
LASER	Type	Laser Light Source	Laser Light Source	Laser Light Source									
	Laser Life (Normal/Quiet)	20,000 hrs	20,000 hrs	20,000 hrs									
INPUT TERMINALS	D-Sub15 (VGA)	2	2	2	2	2	2	2	2	2	2	1	
	Composite Video (RCA)				1	1	1	1	1	1	1	1	
	S-Video				1	1	1						
	HDMI	2	2	2	1	1	1	3	3	3	3	3	
	HD BaseT	1	1	1									
	USB	Ax1, Bx1	Ax1, Bx1	Ax1, Bx1	Ax1, Bx1	Ax1, Bx1	Ax1, Bx1	Ax1, Bx1	Ax1, Bx1	Ax1, Bx1	Ax1, Bx1	Ax1, Bx1	Ax2, Bx1
	Audio Input RCA / Stereo Mini Jack	0 / 2	0 / 2	0 / 2	1 / 2	1 / 2	1 / 2	0 / 3	0 / 3	0 / 3	0 / 3	0 / 3	0 / 2
	Mic-Input				1	1	1	1	1	1	1	1	1
OUTPUT TERMINALS	Monitor-Out	1 Share with Computer 2	1 Share with Computer 2	1 Share with Computer 2	1	1	1	1 Share with Computer 2	1 Share with Computer 2	1 Share with Computer 2	1 Share with Computer 2	1	
	Audio-Out	1	1	1	1	1	1	1	1	1	1	1	
NETWORK	Network (LAN RJ45)	1	1	1	1	1	1	1	1	1	1	1	
	Wireless	Optional	Optional	Built-in Support Screen Mirroring	Optional	Optional	Optional	Optional	Optional	Optional	Optional	Optional	
CONTROL	RS-232C	1	1	1	1	1	1	1	1	1	1	1	
OTHERS	Power (Normal/Eco) Consumption	322 / 244 W	353 / 265 W	353 / 265 W	298 / 221 W	298 / 221 W	298 / 221 W	354 / 309 W	354 / 309 W	354 / 309 W	354 / 309 W	401 / 334 W	
	Speaker Wattage	10 W Monoaural	10 W Monoaural	10 W Monoaural	16 W Monoaural	16 W Monoaural	16 W Monoaural	16 W Monoaural	16 W Monoaural	16 W Monoaural	16 W Monoaural	16 W Monoaural	
	Weight (kg) *Without Accessories	8.5 kg	8.5 kg	8.5 kg	3.7 kg	3.7 kg	3.9 kg	5.7 kg	5.7 kg	5.8 kg	5.8 kg	8.3 kg	
	Air Filter	ELPAF56	ELPAF56	ELPAF56	ELPAF47	ELPAF47	ELPAF47	ELPAF49	ELPAF49	ELPAF49	ELPAF49	ELPAF45	
	Lamp Model	N/A	N/A	N/A	ELPLP87	ELPLP87	ELPLP87	ELPLP91	ELPLP91	ELPLP91	ELPLP91	ELPLP92	

# BUSINESS PROJECTORS

## QUICK GUIDE

### Laser Ultra Short Throw Series

### Ultra Portable Series

### Ultra Portable Series

### Mid Sized Room



Model Name		EB-1485Fi	EB-1785W	EB-1781W	EB-1780W	EB-1795F	EB-2265U	EB-2255U	EB-2155W
		Touch Interactive	Gesture Presenter	Gesture Presenter		Gesture Presenter	Screen Mirroring	Screen Mirroring	Screen Mirroring
MAIN SPECIFICATIONS	White Brightness	5,000 lm	3,200 lm	3,200 lm	3,000 lm	3,200 lm	5,500 lm	5,000 lm	5,000 lm
	Colour Brightness	5,000 lm	3,200 lm	3,200 lm	3,000 lm	3,200 lm	5,500 lm	5,000 lm	5,000 lm
	Native Resolution	1080p	WXGA	WXGA	WXGA	1080p	WUXGA	WUXGA	WXGA
	Contrast Ratio	>2,500,000:1	10,000:1	10,000:1	10,000:1	10,000:1	15,000:1	15,000:1	15,000:1
	Keystone (V) / (H)	±3° <sub>(V)</sub> / ±3° <sub>(H)</sub>	±45° <sub>(V)</sub> / ±30° <sub>(H)</sub>	±45° <sub>(V)</sub> / ±30° <sub>(H)</sub>	±45° <sub>(V)</sub> / ±30° <sub>(H)</sub>	±45° <sub>(V)</sub> / ±30° <sub>(H)</sub>	±30° <sub>(V)</sub> / ±30° <sub>(H)</sub>	±30° <sub>(V)</sub> / ±30° <sub>(H)</sub>	±30° <sub>(V)</sub> / ±30° <sub>(H)</sub>
	Optical Zoom		1.2x	1.2x	1.2x	1.2x	1.6x	1.6x	1.6x
	Auto Keystone		●	●	● (Vertical Only)	●	●	●	●
LAMP	Lamp Life (Normal/Eco)		4,000 / 7,000 hrs	4,000 / 7,000 hrs	4,000 / 7,000 hrs	4,000 / 7,000 hrs	5,000 / 10,000 hrs	5,000 / 10,000 hrs	5,000 / 10,000 hrs
LASER	Type	Laser Light Source							
	Laser Life (Normal/Quiet)	20,000 hrs							
INPUT TERMINALS	D-Sub15 (VGA)	2	1	1	1	1	2	2	2
	Composite Video (RCA)	1	1	1	1	1	1	1	1
	S-Video								
	HDMI	3	1 1 x Support MHL	1 1 x Support MHL	1 1 x Support MHL	1 1 x Support MHL	2 1 x Support MHL	2 1 x Support MHL	2 1 x Support MHL
	HD BaseT	1					1		
	USB	Ax2, Bx2	Ax1, Bx1	Ax1, Bx1	Ax1, Bx1	Ax1, Bx1	Ax1, Bx1	Ax1, Bx1	Ax1, Bx1
	Audio Input RCA / Stereo Mini Jack	0 / 3	0 / 1	0 / 1	0 / 1	0 / 1	1 / 2	1 / 2	1 / 2
Mic-Input	1								
OUTPUT TERMINALS	Monitor-Out	1					1 Share with Computer 2	1 Share with Computer 2	1 Share with Computer 2
	Audio-Out	1					1	1	1
	SDI (BNC) Out								
	DVI-D Out								
	HDMI Out	1							
NETWORK	Network (LAN RJ45)	1					1	1	1
	Wireless	Built-in	Built-in Support Screen Mirroring	Built-in	Built-in	Built-in Support Screen Mirroring	Optional	Optional	Optional
CONTROL	RS-232C	1					1	1	1
OTHERS	Power (Normal/Eco) Consumption	366 / 262 W	295 / 208 W	295 / 208 W	277 / 200 W	295 / 208 W	425 / 323 W	405 / 323 W	405 / 323 W
	Speaker Wattage	8 x 8 W Stereo	1 W	1 W	1 W	1 W	16 W	16 W	16 W
	Weight (kg) *Without Accessories	9.3 kg	1.81 kg	1.81 kg	1.77 kg	1.83 kg	4.7 kg	4.7 kg	4.3 kg
	Air Filter	ELPAF56	ELPAF53	ELPAF53	ELPAF53	ELPAF53	ELPAF41	ELPAF41	ELPAF41
	Lamp Model	N/A	ELPLP94	ELPLP94	ELPLP94	ELPLP94	ELPLP95	ELPLP95	ELPLP95



# BUSINESS PROJECTORS

## QUICK GUIDE

### Mid Sized Rooms

### Large Venues



### Large Venues

### Large Venues



Model Name		EB-2165W Screen Mirroring	EB-2055	EB-2065	EB-G7100NL	EB-G7200WNL	EB-G7805NL	EB-G7905UNL	EB-L1060UNL	EB-L1070UNL	EB-L1495UNL	EB-L1505UHNL	EB-L1515SNL
MAIN SPECIFICATIONS	White Brightness	5,500 lm	5,000 lm	5,500 lm	6,500 lm	7,500 lm	8,000 lm	7,000 lm	6,000 lm	7,000 lm	9,000 lm	12,000 lm	12,000 lm
	Colour Brightness	5,500 lm	5,000 lm	5,500 lm	6,500 lm	7,500 lm	8,000 lm	7,000 lm	6,000 lm	7,000 lm	9,000 lm	12,000 lm	12,000 lm
	Native Resolution	WXGA	XGA	XGA	XGA	WXGA	XGA	WUXGA	WUXGA	WUXGA	WUXGA	WUXGA	SXGA+
	Contrast Ratio	15,000:1	15,000:1	15,000:1	50,000:1	50,000:1	50,000:1	50,000:1	>2,500,000:1	>2,500,000:1	>2,500,000:1	>2,500,000:1	>2,500,000:1
	Keystone (V) / (H)	±30° (V) / ±30° (H)	±30° (V) / ±30° (H)	±30° (V) / ±30° (H)	±45° (V) / ±30° (H)	±45° (V) / ±30° (H)	±45° (V) / ±30° (H)	±45° (V) / ±30° (H)	±45° (V) / ±30° (H)	±45° (V) / ±30° (H)	±45° (V) / ±30° (H)	±45° (V) / ±30° (H)	±45° (V) / ±30° (H)
	Optical Zoom	1.6x	1.6x	1.6x	1.6x *Using ELPLM08 lens	1.6x *Using ELPLM08 lens	1.6x *Using ELPLM08 lens	1.6x *Using ELPLM08 lens	1.6x *Using ELPLM08 lens	1.6x *Using ELPLM08 lens	1.6x *Using ELPLM15 lens	1.6x *Using ELPLM15 lens	1.6x *Using ELPLM15 lens
	Auto Keystone	●	●	●									
	4K Enhancement							●	●	●	●	●	
LAMP	Lamp Life (Normal/Eco)	5,000 / 10,000 hrs	5,000 / 10,000 hrs	5,000 / 10,000 hrs	3,000 / 4,000 hrs Portrait 2,000 hrs	3,000 / 4,000 hrs Portrait 2,000 hrs	3,000 / 4,000 hrs Portrait 2,000 hrs	3,000 / 4,000 hrs Portrait 2,000 hrs					
LASER	Type							Laser Light Source	Laser Light Source	Laser Light Source	Laser Light Source	Laser Light Source	
	Laser Life (Normal/Quiet)							20,000 hrs	20,000 hrs	20,000 hrs	20,000 hrs	20,000 hrs	
INPUT TERMINALS	D-Sub15 (VGA)	2	2	2	1	1	1	1	1	1	1	1	1
	Composite Video (RCA)	1	1	1									
	HDMI	2 1 x Support MHL	2 1 x Support MHL	2 1 x Support MHL	1 With HDCP 2.2	1 With HDCP 2.2	1 With HDCP 2.2	1 With HDCP 2.2	1 With HDCP 2.2	1 With HDCP 2.2	1	1	1
	DVI-D				1	1	1	1	1	1	1	1	1
	5BNC				1	1	1	1	1	1	1	1	1
	SDI (BNC)										1	1	
	HD BaseT	1			1	1	1	1	1	1	1	1	1
	USB	Ax1, Bx1	Ax1, Bx1	Ax1, Bx1	Ax1, Bx1	Ax1, Bx1	Ax1, Bx1	Ax1, Bx1	Ax1, Bx1	Ax1, Bx1	Ax1, Bx1	Ax1, Bx1	Ax1, Bx1
	Audio Input RCA / Stereo Mini Jack	1 / 2	1 / 2	1 / 2	0 / 3	0 / 3	0 / 3	0 / 3	0 / 3	0 / 3	0 / 3	0 / 3	0 / 3
	OUTPUT TERMINALS	Monitor-Out	1 Share with Computer 2	1 Share with Computer 2	1 Share with Computer 2	1	1	1	1	1	1	1	1
Audio-Out	1	1	1	1	1	1	1	1	1	1	1	1	
NETWORK	Network (LAN RJ45)	1	1	1	1	1	1	1	1	1	1	1	
	Wireless	Optional	Optional	Optional	Optional	Optional	Optional	Optional	Optional	Optional	Optional	Optional	
CONTROL	RS232C	1	1	1	1	1	1	1	1	1	1	1	
	Remote (Stereo Mini)				1	1	1	1	1	1	1	1	
OTHERS	Power (Normal/Eco) Consumption	425 / 323 W	405 / 323 W	425 / 323 W	515 / 477 W	572 / 477 W	572 / 477 W	572 / 477 W	345 / 252 W	416 / 299 W	626 / 512 W	908 / 597 W	908 / 597 W
	Speaker Wattage	16 W	16 W	16 W	10 W	10 W	10 W	10 W					
	Weight (kg) *Without Accessories	4.6 kg	4.3 kg	4.4 kg	12.9 kg	12.9 kg	12.9 kg	12.9 kg	15.6 kg	15.6 kg	21.9 kg	21.9 kg	21.9 kg
	Air Filter	ELPAF41	ELPAF41	ELPAF41	ELPAF30	ELPAF30	ELPAF30	ELPAF30	ELPAF46	ELPAF46	ELPAF51	ELPAF51	ELPAF51
	Lamp Model	ELPLP95	ELPLP95	ELPLP95	ELPLP93	ELPLP93	ELPLP93	ELPLP93	N/A	N/A	N/A	N/A	N/A

# BUSINESS PROJECTORS

## QUICK GUIDE

Large Venues

Lighting Projectors



Model Name	EB-L1715SNL	EB-L1755UNL	EB-L12000QNL	EB-L20000UNL	EB-L25000UNL	EV-100/105
<b>MAIN SPECIFICATIONS</b>						
White Brightness	15,000 lm	15,000 lm	12,000 lm	20,000 lm	25,000 lm	2,000 lm
Colour Brightness	15,000 lm	15,000 lm	12,000 lm	20,000 lm	25,000 lm	2,000 lm
Native Resolution	SXGA+	WUXGA	4K	WUXGA	WUXGA	WXGA
Contrast Ratio	>2,500,000:1	>2,500,000:1	>2,500,000:1	>2,500,000:1	>2,500,000:1	>2,500,000:1
Keystone (V) / (H)	±45° (V) / ±30° (H)	±45° (V) / ±30° (H)	±45° (V) / ±30° (H)	±44° (V) / ±30° (H)	±45° (V) / ±30° (H)	±45° (V) / ±40° (H)
Optical Zoom	1.6x <small>*Using ELPLM15 lens</small>	1.6x <small>*Using ELPLM15 lens</small>	1.6x <small>*Using ELPLM15 lens</small>	1.6x <small>*Using ELPLM15 lens</small>	1.35x <small>*Using ELPLM12 lens</small>	1.58x
4K Enhancement		●			●	
<b>LAMP</b>						
Lamp Life (Normal/Eco)						
<b>LASER</b>						
Type	Laser Light Source	Laser Light Source	Laser Light Source	Laser Light Source	Laser Light Source	Laser Light Source
Laser Life (Normal/Quiet)	20,000 hrs	20,000 hrs	20,000 hrs	20,000 hrs	20,000 hrs	20,000 hrs
<b>INPUT TERMINALS</b>						
D-Sub15 (VGA)	1	1	1	1	1	
HDMI	1	1	Optional ELPIF 01	Optional ELPIF 01	1	1
DVI-D	1	1	Optional ELPIF 01	Optional ELPIF 01	1	
5BNC	1	1		1	1	
SDI (BNC)		1	Optional ELPIF 02	1 SD/HD & 3G-SDI	1	
DisplayPort			Optional ELPIF 03	Optional ELPIF 03		
HD BaseT	1	1	1	1	1	
USB	Ax1, Bx1	Ax1, Bx1	Ax1, Bx1	Ax1, Bx1	Ax1, Bx1	Ax1, Bx1
Audio Input RCA / Stereo Mini Jack	0 / 3	0 / 3				
SD Card Slot						●
<b>OUTPUT TERMINALS</b>						
Monitor-Out	1	1	1	1	1	
Audio-Out	1	1				1
SDI (BNC) Out			Optional ELPIF 02	1	1	
<b>NETWORK</b>						
Network (LAN RJ45)	1	1	1	1	1 Artnet	1
Wireless	Optional	Optional	Built-in	Built-in	Optional	Built-in
<b>CONTROL</b>						
RS232C	1	1	1	1	1	
Remote (Stereo Mini)	1	1	1	1	1	
<b>OTHERS</b>						
Power (Normal/Eco) Consumption	1024 / 647 W	1024 / 647 W	1741 / 1030 W	1860 / 1123 W	2390 / 1670 W	170 / 118 W
Speaker Wattage						
Weight (kg) *Without Accessories	22.2 kg	22.3 kg	51.3 kg	49.6 kg	65.6 kg	5.0 kg (Excluding Direct Mount)
Air Filter	ELPAF51	ELPAF51	ELPAF58	ELPAF58	ELPAF52	N/A
Lamp Model	N/A	N/A	N/A	N/A	N/A	N/A



**EPSON**  
EXCEED YOUR VISION

100" EPSON PROJECTOR DISPLAY



70" FLAT PANEL DISPLAY



- FLEXIBLE DISPLAY SIZE**  
From small spaces to big areas, project visuals up to 100 inch.
- VALUE FOR MONEY**  
Projectors give larger display at a lower cost per inch over flat panel displays.
- FLEXIBLE PLACEMENT**  
Projector can be placed in multiple positions to fit any presentation setting.

## BIG ON DETAILS, MAXIMISING BUSINESS ENGAGEMENTS.

In business, every minor detail matters. Ensure that everyone sees everything from every corner of the room, clearly. Epson projectors are developed to display images with exceptional clarity that will surely engage and captivate all audiences. Compact in size but big on projection. It's In The Details.





# HOME PROJECTORS

## QUICK GUIDE

### Home Entertainment Projectors



Model Name		EH-TW650	EH-TW5650	EH-TW7000
MAIN SPECIFICATIONS	White Brightness	3,100 lm	2,500 lm	3,000 lm
	Colour Brightness	3,100 lm	2,500 lm	3,000 lm
	Native Resolution	1080p	1080p	1080p
	Contrast Ratio	15,000:1	60,000:1	40,000:1
	Keystone (V) / (H)	±30° <sup>(V)</sup> / ±30° <sup>(H)</sup>	±30° <sup>(V)</sup> / ±30° <sup>(H)</sup>	±30° <sup>(V)</sup> / ±30° <sup>(H)</sup>
	Auto Keystone	● (Vertical Only)	● (Vertical Only)	
LAMP	Lamp Life	Normal 4,500 hrs Eco 7,500 hrs	Normal 4,500 hrs Eco 7,500 hrs	High 3,500 hrs Medium 4,000 hrs Eco 5,000 hrs
	Type			
LASER	Laser Life (High/Medium/Eco)			
	Type			
INPUT / OUTPUT TERMINALS	D-Sub15 (VGA)	1	1	
	Composite Video (RCA)	1		
	HDMI	2 (1 x support MHL)	2 (1 x support MHL)	2 (HDCP 2.2)
	USB	Ax1, Bx1	Ax1, Bx1	Ax2, Bx1
	Audio Input	1		
	Audio Output		1	1
NETWORK	Network (LAN RJ45)			
	Wireless (802.11 a/b/g/n)	Built-in	Built-in Support Screen Mirroring	Optional
CONTROL	RS-232C			
	Trigger-Out (12V)			
FEATURES	3D		●	●
	2D – 3D Conversion		●	
	3D Depth Adjustment		●	●
	Frame Interpolation		●	●
	Super Resolution			●
	Cinema Filter			
	Split Screen	●	●	
	Picture-in-Picture			●
LENS SHIFT	Vertical Range (V)		+45° – 60°	±60°
	Horizontal Range (H)			±24°
OTHERS	Speaker Wattage	2 w	10 w	
	Weight (kg) *Without Accessories	2.7 kg	3.5 kg	6.6 kg
	Air Filter	ELPAF32	ELPAF55	ELPAF39
	Lamp Model	ELPLP96	ELPLP96	ELPLP85

### Home Entertainment Projectors



Model Name		EH-TW7400	EH-TW9400	EF-100B/W	EH-LS500B
MAIN SPECIFICATIONS	White Brightness	2,400 lm	2,600 lm	2,000 lm	4,000 lm
	Colour Brightness	2,400 lm	2,600 lm	2,000 lm	4,000 lm
	Native Resolution	1080p	1080p	WXGA	1080p
	Contrast Ratio	200,000:1	1,200,000:1	>2,500,000:1	>2,500,000:1
	Keystone (V) / (H)	±30° <sup>(V)</sup>	±30° <sup>(V)</sup>	±45° <sup>(V)</sup> / ±40° <sup>(H)</sup>	±3° <sup>(V)</sup> / ±3° <sup>(H)</sup>
	Auto Keystone			●	
LAMP	Lamp Life	Normal 3,500 hrs Medium 4,000 hrs Eco 5,000 hrs	Normal 3,500 hrs Medium 4,000 hrs Eco 5,000 hrs		
	Type			Laser Light Source	Laser Light Source
LASER	Laser Life (High/Medium/Eco)			20,000 hrs	20,000 hrs
	Type				
INPUT / OUTPUT TERMINALS	D-Sub15 (VGA)	1	1		
	Composite Video (RCA)				
	HDMI	2 (HDMI1 supports HDCP 2.2) (HDMI2 supports HDCP 1.4)	2 (HDCP 2.2)	1	3 (HDCP 2.2)
	USB	Ax2, Bx1	Ax2, Bx1	Ax1, Bx1	Ax1, Bx1 (Mini)
	Audio Input				
	Audio Output			1	1
NETWORK	Network (LAN RJ45)	1	1		1
	Wireless (802.11 a/b/g/n)	Optional	Optional		Optional
CONTROL	RS-232C	1	1		1
	Trigger-Out (12V)	1	1		
FEATURES	3D	●	●		●
	2D – 3D Conversion	●			●
	3D Depth Adjustment	●	●		●
	Frame Interpolation	●	●		●
	Super Resolution	●	●		●
	Cinema Filter	●	●		
	Split Screen				
	Picture-in-Picture	● (HDMI)			
LENS SHIFT	Vertical Range (V)	±96.3°	±96.3°		
	Horizontal Range (H)	±47.1°	±47.1°		
OTHERS	Speaker Wattage			5 w	10 w X 10 w
	Weight (kg) *Without Accessories	11.2 kg	11.2 kg	2.7 kg	9.3 kg
	Air Filter	ELPAF39	ELPAF39	ELPAF57	ELPAF56
	Lamp Model	ELPLP89	ELPLP89	N/A	N/A